

# INSTRUCTIONS FOR USE

Sterilization



## Sure-Check® Sterilization Pouch

### Instructions for use:

1. **Storage** - Store all sterilization pouches in a cool, dry place.
2. **Loading\*** - Carefully place items into pouches and remove excess air before sealing. Where possible, use a pouch rack to stand pouches on edge in the sterilizer to facilitate sterilization and drying. When loading multiple pouches, be sure that the plastic side faces the paper side of each adjacent pouch.
3. **Sterilization** - Steam chemical indicator ink printed on the inside of each Sure-Check® pouch is certified as a multi-variable (parameter) indicator. Internal multi-variable (parameter) chemical indicators are designed to react to the 3 variables required for sterilization - temperature, specified time, presence of steam - and provide a more reliable indication that the conditions for sterilization have been met. Pink indicators will turn brown when processed by steam. Blue indicators will turn gold/brown when EtO processed. Multi-variable (parameter) indicators meet the 2008 CDC †Guidelines for sterilization. Sure-Check® pouches are only available for use in steam sterilizers (autoclaves) and EtO. This procedure, when used in conjunction with routine biological monitoring (spore testing), provides you with the highest level of sterility assurance.  
Caution - wet pouches may not preserve sterility of contents.
4. **Shelf Life** - When properly sealed, sterility is maintained up to three (3) years provided the integrity of the pouch has not been compromised, i.e. pouch becomes wet, damaged or is opened during storage.  
Caution - wet pouches may not preserve sterility of contents.

Sure-Check sterilization pouches are single use items. Do not re-use.

Sure-Check® Sterilization Pouches are not considered hazardous waste and can be disposed of in regular trash (40 CFR 261.24 tested using the TCLP, EPA Publication SW-846).

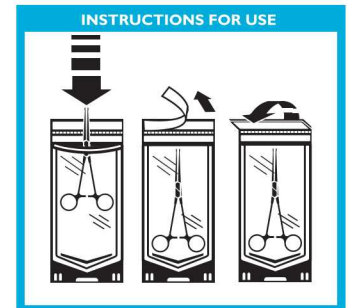
\* REFERENCE - ANSI/AAMI ST79 Comprehensive Guide to Steam Sterilization and Assurance in Health Care Facilities.

† CDC Guideline for Disinfection and Sterilization in Healthcare Facilities, 2008.

Available in 14 Sizes!



Ref.#'s SCXX2, SCX2, SCXS2, SCS2, SCS25, SCL3222, SCW2, SCM2, SCL5152, SCL2, SCL8162, SCL10152, SCL10172, SCL12152, SCL12182



Sure-Check® is a registered trademark of Crosstex International, Inc.



DISTRIBUTED BY KEY SURGICAL LLC  
8101 WALLACE ROAD / EDEN PRAIRIE, MN 55344 / USA  
PH: 800.541.7995 KEYSURGICAL.COM



Do not reuse.



Not made with natural rubber latex.



**CROSSTEX**  
A CANTEL MEDICAL COMPANY



MDSS GmbH  
Schiffgraben 41  
30175 Hannover, Germany



Made in USA

Manufactured by: Crosstex International, Inc.  
10 Ranick Road | Hauppauge, NY 11788 | 631.582.6777 | 888.276.7783 | Crosstex@crosstex.com

SC-IFU  
Rev. 0 - 3/17