

TAGS

Our tags allow you to indicate special handling instructions, secure trays and carts from tampering and quickly identify priority instruments for repair and sterilization. Tags are available in a wide range of styles, colors and locking configurations. Printed tags with special handling instructions, as well as uniquely numbered tags, are available as a standard product. Need a customized tag? We can do that for you!

Write-On Tags allow you to write specific handling instructions on each tag when more detailed communication is necessary. These tags attach to instruments and trays with ties, and are larger and more visible than other tags, ensuring that detailed instructions will be seen easily.

Metal Tray Tags clip onto the edge of a tray and provide ample space for identification, tracking and barcoding needs. Made with stainless steel for durability.

[Plastic Tray Tags](#)

[Clamp Tag Holders](#)

[Metal Tray Tags](#)

[Tags Accessories](#)

[One-Loop Tags](#)

[Self-Tie Tags](#)

[Write-On Tags](#)



Unless otherwise stated, our products are not made with natural rubber latex.

Tags - Plastic Tray Tags



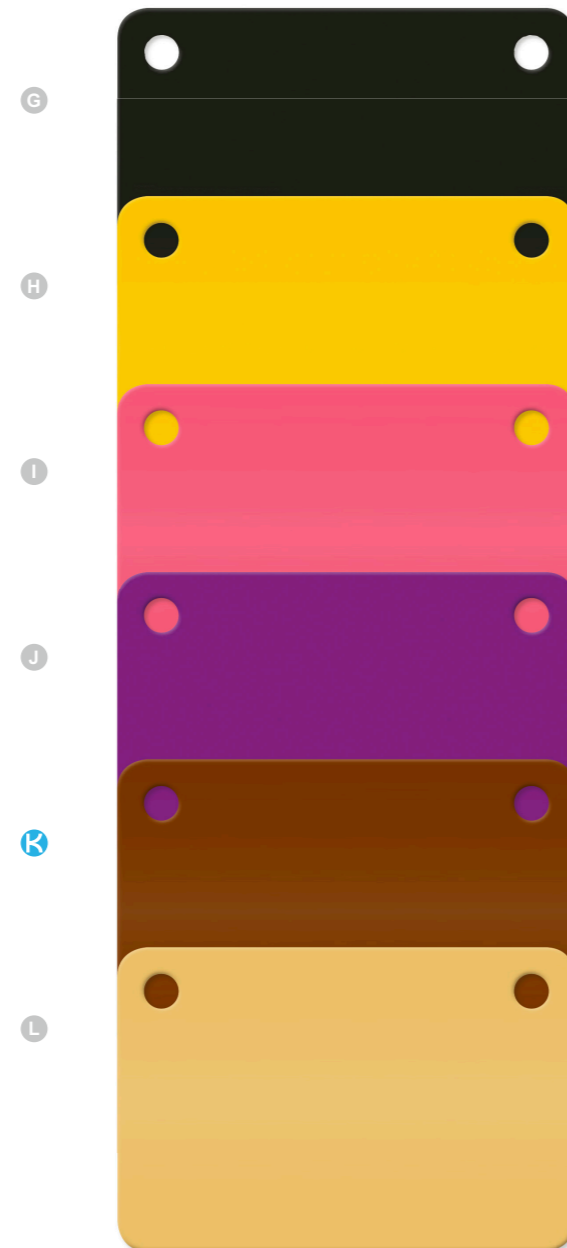
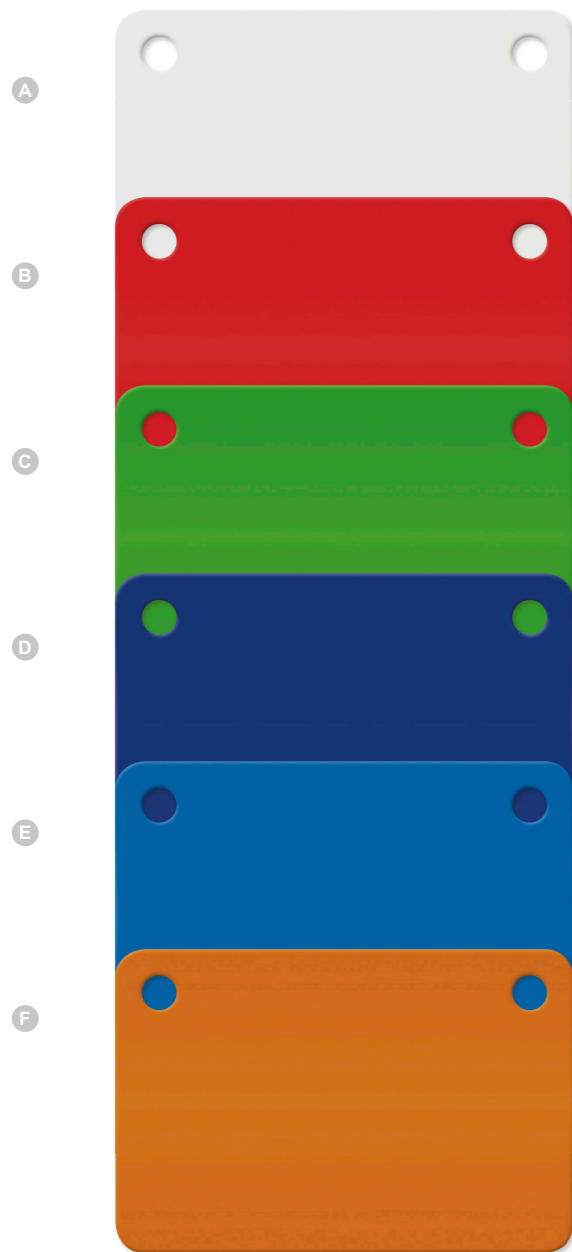
TRAY TAGS FOR COLOR CODING

Durable, plastic tags designed for use on instrument trays. Tray tags provide a flat surface for barcode placement. Great for color coding. Compatible with steam and H₂O₂ sterilization. Designed to be attached to a tray using a fastener such as a ring or clip.

REF	Color	Format (mm)	Qty
A 01900	red	90 x 33	100 pcs
B 01901	green	90 x 33	100 pcs
C 01902	light blue	90 x 33	100 pcs
D 01904	white	90 x 33	100 pcs
E 01905	orange	90 x 33	100 pcs
F 01912	black	90 x 33	100 pcs
G 01956	brown	90 x 33	100 pcs
H 01962	dark blue	90 x 33	100 pcs
I 01976	pink	90 x 33	100 pcs
J 01977	purple	90 x 33	100 pcs
K 02274	light red	90 x 33	100 pcs
L 02275	gray	90 x 33	100 pcs

FIRST TAG SHOWN ACTUAL SIZE

Tags- Plastic Tray Tags



TAGS FOR BASKET IDENTIFICATION WITH 2 HOLES

Durable, plastic tags designed for use on instrument trays. Tray tags provide a flat surface for barcode placement. Great for color coding. Compatible with steam and H₂O₂ sterilization. The tags are designed to be attached to a tray using a fastener such as a ring or clip.

REF	Color	Format (mm)	Qty
A 01948	white	60 x 40	100 pcs
B 01949	red	60 x 40	100 pcs
C 01950	green	60 x 40	100 pcs
D 01969	dark blue	60 x 40	100 pcs
E 01951	light blue	60 x 40	100 pcs
F 01952	orange	60 x 40	100 pcs
G 01953	black	60 x 40	100 pcs
H 01954	yellow	60 x 40	100 pcs
I 01990	pink	60 x 40	100 pcs
J 01991	purple	60 x 40	100 pcs
K 02278	brown	60 x 40	100 pcs
L 02279	ochre yellow	60 x 40	100 pcs

FIRST TAG SHOWN ACTUAL SIZE

K

Tags



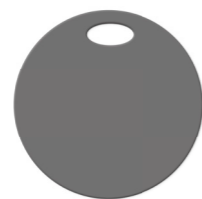
PLASTIC TRAY TAGS

Tray tags simplify the identification of sets or instruments and provide a useful means of labelling items for tracking and tracing. All tags are produced to withstand the rigorous decontamination cycle. Available in 18 colors. Tray tags can be attached to trays using either a split ring or a cable tie.

REF	Color	Format (mm)	Qty
A TAG020	black	90 x 38	100 pcs
B TAG018	gray	90 x 38	100 pcs
C TAG027	sky blue	90 x 38	100 pcs
D TAG026	royal blue	90 x 38	100 pcs
E TAG023	turquoise	90 x 38	100 pcs
F TAG017	green	90 x 38	100 pcs
G TAG021	lime	90 x 38	100 pcs
H TAG013	yellow	90 x 38	100 pcs
I TAG014	orange	90 x 38	100 pcs
J TAG015	red	90 x 38	100 pcs
K TAG012	brown	90 x 38	100 pcs
L TAG011	white	90 x 38	100 pcs
TAG016	blue	90 x 38	100 pcs
TAG019	purple	90 x 38	100 pcs
TAG022	pink	90 x 38	100 pcs
TAG024	mustard	90 x 38	100 pcs
TAG025	terracotta	90 x 38	100 pcs
TAG55WH	white	90 x 55	100 pcs



WHITE TAG SHOWN ACTUAL SIZE

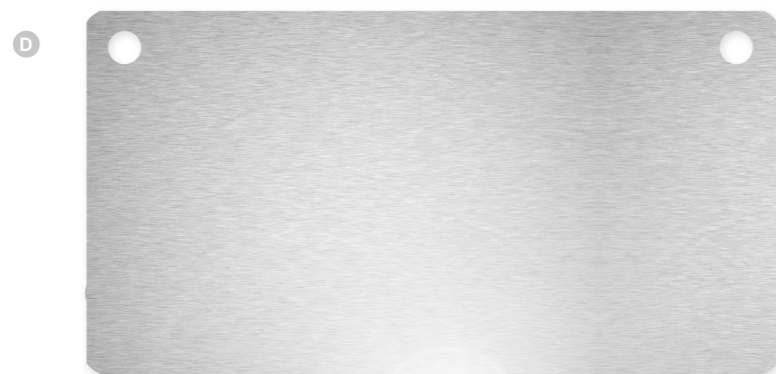


A



B

C



D

PTL TAGS

Our PTL tray tags are compatible with P-touch and laser inscription including text and barcode. For multiple use and heat-resistant up to 134 °C.

REF	Color	Format Ø (mm)	Qty
A 01546	gray	25	100 pcs

PTL TIE-ON TAGS WITH 4 HOLES

PTL tie-on tags are designed for multiple use. They can be attached to the tray by using REF 01589. These are compatible with P-touch and laser inscribed including text and barcode. Heat-resistant up to 134 °C.

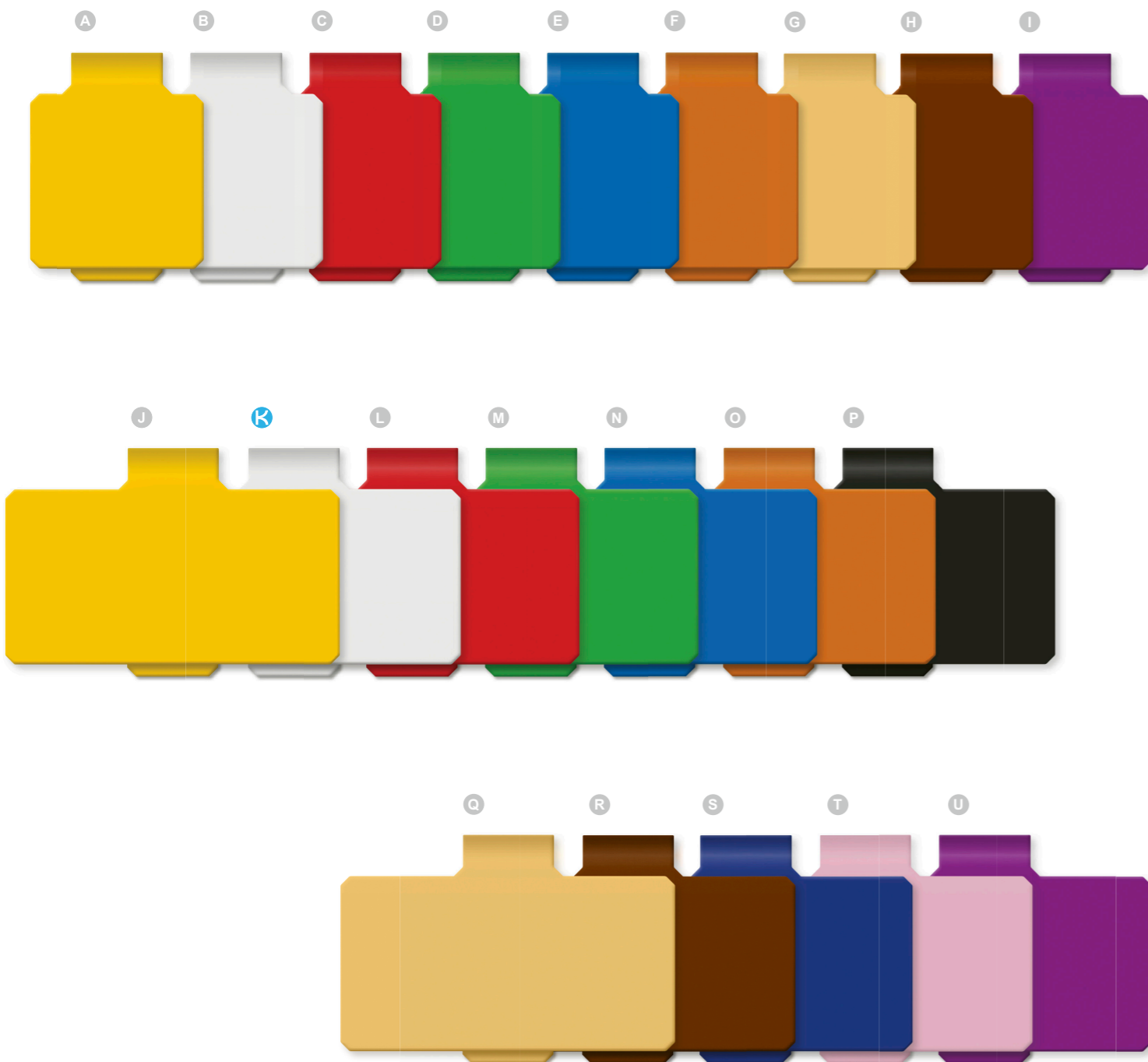
REF	Color	Format (mm)	Qty
B 02253	light blue	90 x 40	100 pcs
C 02254	white	90 x 40	100 pcs

MESH TRAY TAGS

These reusable tags are not suitable for P-touch, and laser marking is not possible. Heat-resistant up to 134 °C.

REF	Description	Format (mm)	Qty
D 01421	perforated	90 x 50	150 pcs
D 01422	perforated	90 x 33	200 pcs

Tags - Plastic Tray Tags



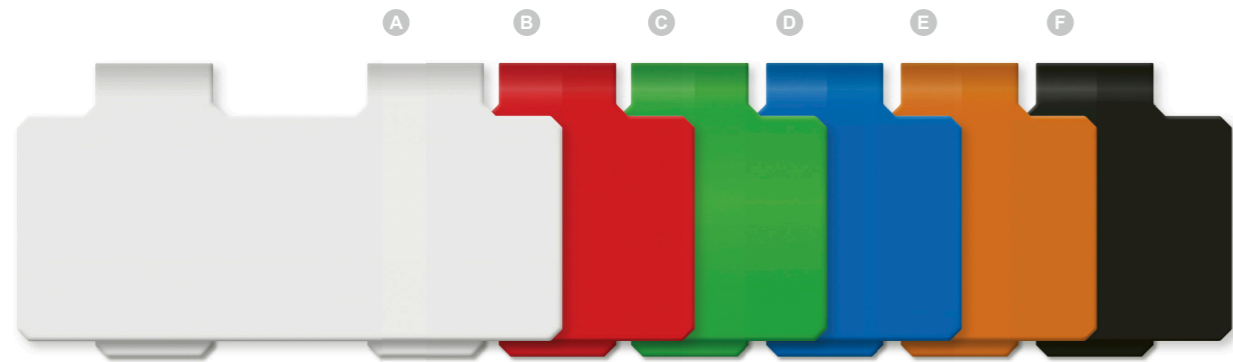
PLASTIC TRAY TAGS

Durable, plastic tags designed for use on instrument trays. Tray tags provide a flat surface for barcode placement. Great for color coding. Compatible with steam and H₂O₂ sterilization. Tags include a built-in clip on the back.

REF	Color	Format (mm)	Qty
A 01563	yellow	30 x 30	25 pcs
B 01913	white	30 x 30	25 pcs
C 01914	red	30 x 30	25 pcs
D 01915	green	30 x 30	25 pcs
E 01916	light blue	30 x 30	25 pcs
F 01917	orange	30 x 30	25 pcs
G 01919	ochre yellow	30 x 30	25 pcs
H 01961	brown	30 x 30	25 pcs
I 01981	purple	30 x 30	25 pcs
J 01561	yellow	55 x 30	25 pcs
K 01920	white	55 x 30	25 pcs
L 01921	red	55 x 30	25 pcs
M 01922	green	55 x 30	25 pcs
N 01923	light blue	55 x 30	25 pcs
O 01924	orange	55 x 30	25 pcs
P 01925	black	55 x 30	25 pcs
Q 01926	ochre yellow	55 x 30	25 pcs
R 01960	brown	55 x 30	25 pcs
S 01965	dark blue	55 x 30	25 pcs
T 01982	pink	55 x 30	25 pcs
U 01983	purple	55 x 30	25 pcs

FIRST TAG SHOWN ACTUAL SIZE

Tags - Plastic Tray Tags



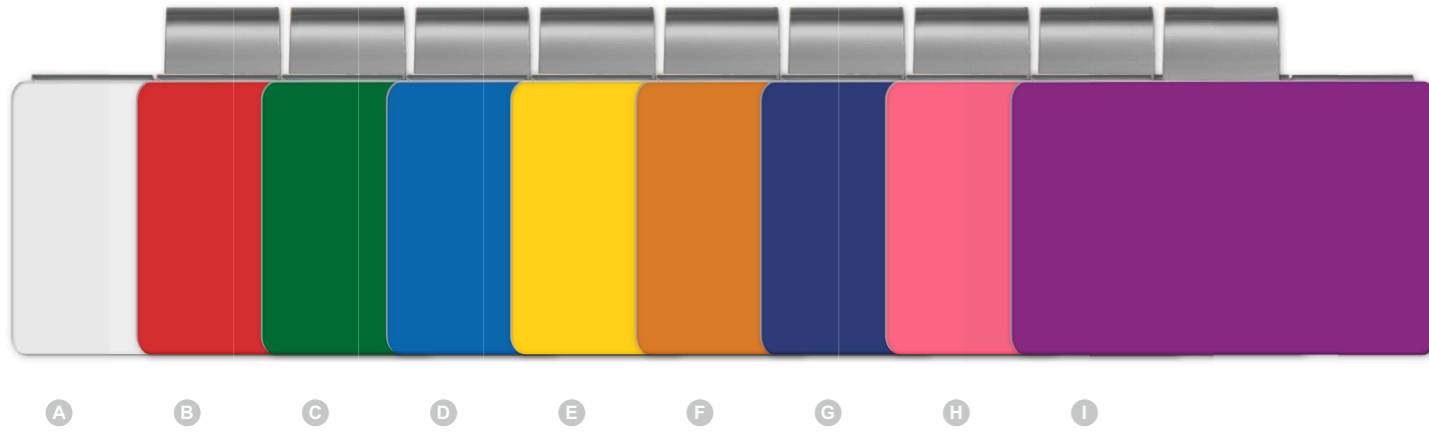
PLASTIC TRAY TAGS

Durable, plastic tags designed for use on instrument trays. Tray tags provide a flat surface for barcode placement. Great for color coding. Compatible with steam and H₂O₂ sterilization. Tags include a built-in clip on the back.

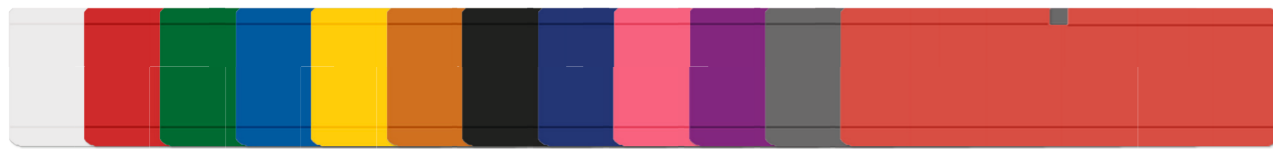
REF	Color	Format (mm)	Qty
A 01927	white	70 x 30	25 pcs
B 01928	red	70 x 30	25 pcs
C 01929	green	70 x 30	25 pcs
D 01930	light blue	70 x 30	25 pcs
E 01931	orange	70 x 30	25 pcs
F 01932	black	70 x 30	25 pcs
G 01933	ochre yellow	70 x 30	25 pcs
H 01966	dark blue	70 x 30	25 pcs
I 01985	purple	70 x 30	25 pcs
J 01564	yellow	90 x 30	25 pcs
K 01934	white	90 x 30	25 pcs
L 01935	red	90 x 30	25 pcs
M 01936	green	90 x 30	25 pcs
N 01937	light blue	90 x 30	25 pcs
O 01938	orange	90 x 30	25 pcs
P 01939	black	90 x 30	25 pcs
Q 01940	ochre yellow	90 x 30	25 pcs
R 01958	brown	90 x 30	25 pcs
S 01967	dark blue	90 x 30	25 pcs

FIRST TAG SHOWN ACTUAL SIZE

Tags - PTL Insert Labels



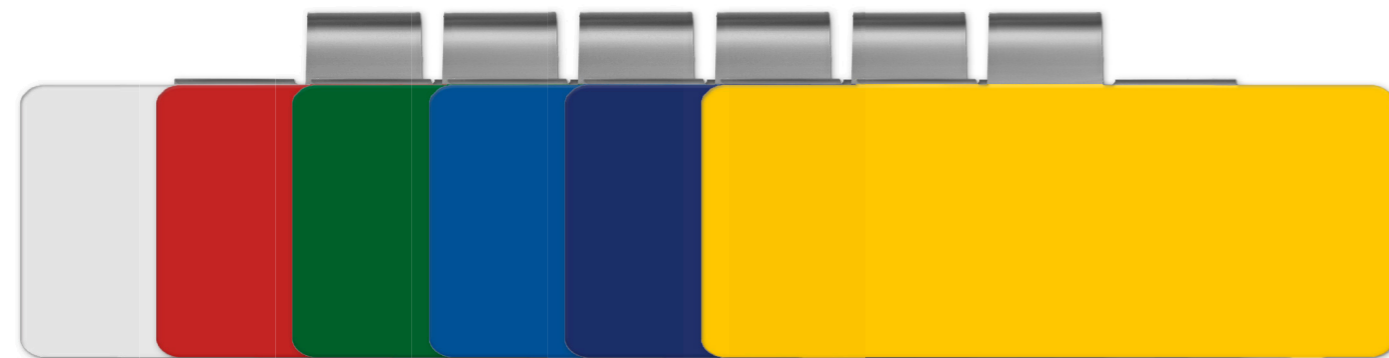
A B C D E F G H I



K L M N O P Q R S T U V



W X Y Z AA BB



CC DD EE FF GG HH

FIRST TAG SHOWN ACTUAL SIZE

PTL INSERT LABELS

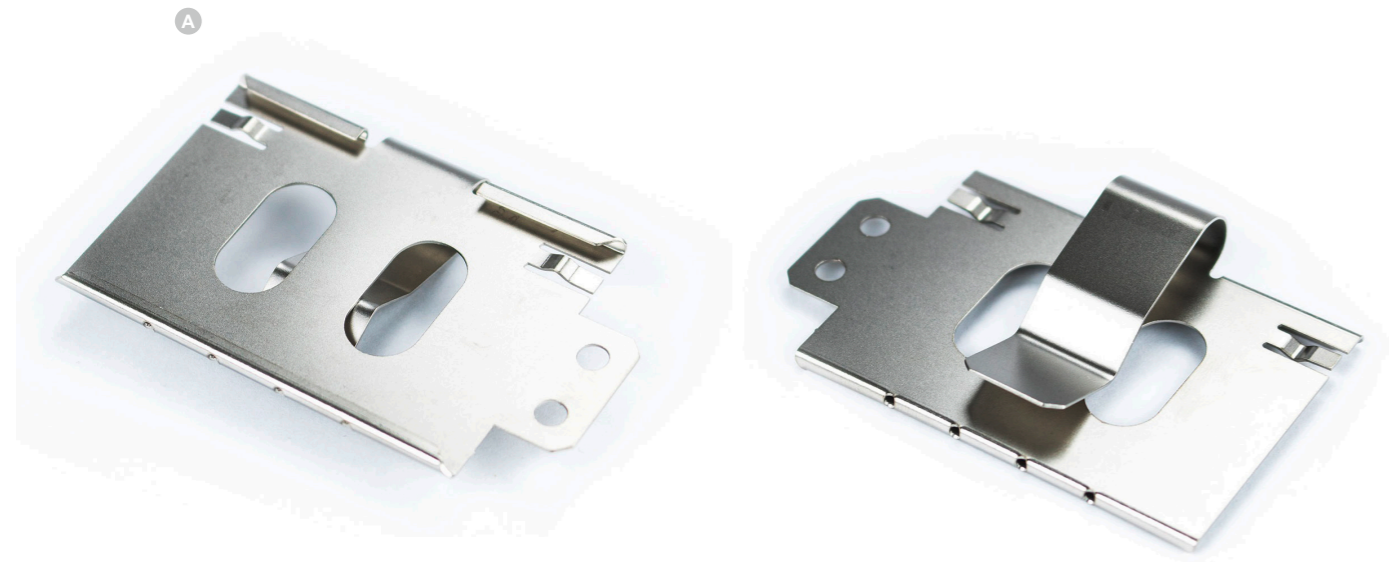
PTL insert labels are reusable. They are suitable for REF 01548, 01497, 01498 and 01995 as well as container holders. These are P-touch compatible and laser labeling including text and barcode is possible. Compatible with steam sterilization and heat-resistant up to 134 °C.

REF	Color	Format (mm)	Qty
A	white	55 x 35	25 pcs
B	red	55 x 35	25 pcs
C	green	55 x 35	25 pcs
D	light blue	55 x 35	25 pcs
E	yellow	55 x 35	25 pcs
F	orange	55 x 35	25 pcs
G	dark blue	55 x 35	25 pcs
H	pink	55 x 35	25 pcs
I	purple	55 x 35	25 pcs
	black	55 x 35	25 pcs
K	white	56 x 18	25 pcs
L	red	56 x 18	25 pcs
M	green	56 x 18	25 pcs
N	light blue	56 x 18	25 pcs
O	yellow	56 x 18	25 pcs
P	orange	56 x 18	25 pcs
Q	black	56 x 18	25 pcs
R	dark blue	56 x 18	25 pcs
S	pink	56 x 18	25 pcs
T	purple	56 x 18	25 pcs
U	gray	56 x 18	25 pcs
V	coral red	56 x 18	25 pcs
W	white	70 x 35	25 pcs
X	red	70 x 35	25 pcs
Y	green	70 x 35	25 pcs
Z	dark blue	70 x 35	25 pcs
AA	yellow	70 x 35	25 pcs
BB	black	70 x 35	25 pcs
CC	white	90 x 35	25 pcs
DD	red	90 x 35	25 pcs
EE	green	90 x 35	25 pcs
FF	light blue	90 x 35	25 pcs
GG	dark blue	90 x 35	25 pcs
HH	yellow	90 x 35	25 pcs
	black	90 x 35	25 pcs
01599	black	90 x 35	25 pcs

K

Tags

Tags - Clamp Holders



CLAMP HOLDER MADE OF STAINLESS STEEL

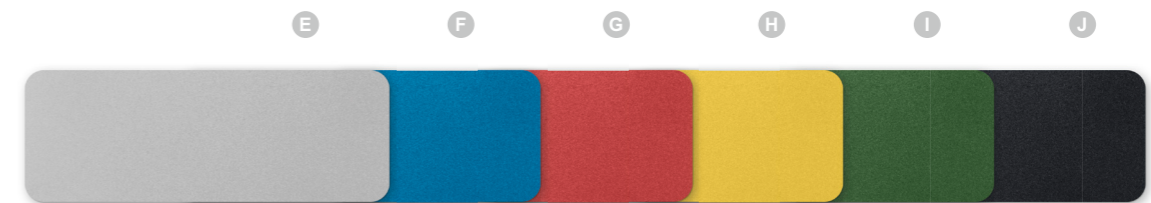
Durable and reusable holders made of stainless steel and heat-resistant.

REF	Description	Format (mm)	Qty
A 01548	tag holder with side flap, suitable for PTL insertion labels	60 x 40	25 pcs
B 01497	tag holder, suitable for PTL insert and aluminum tags	50 x 20	25 pcs
C 01498	tags holder, suitable for PTL tags	60 x 40	25 pcs
D 01995	tag holder for wire baskets	80 x 30	25 pcs

ALUMINUM LABELS

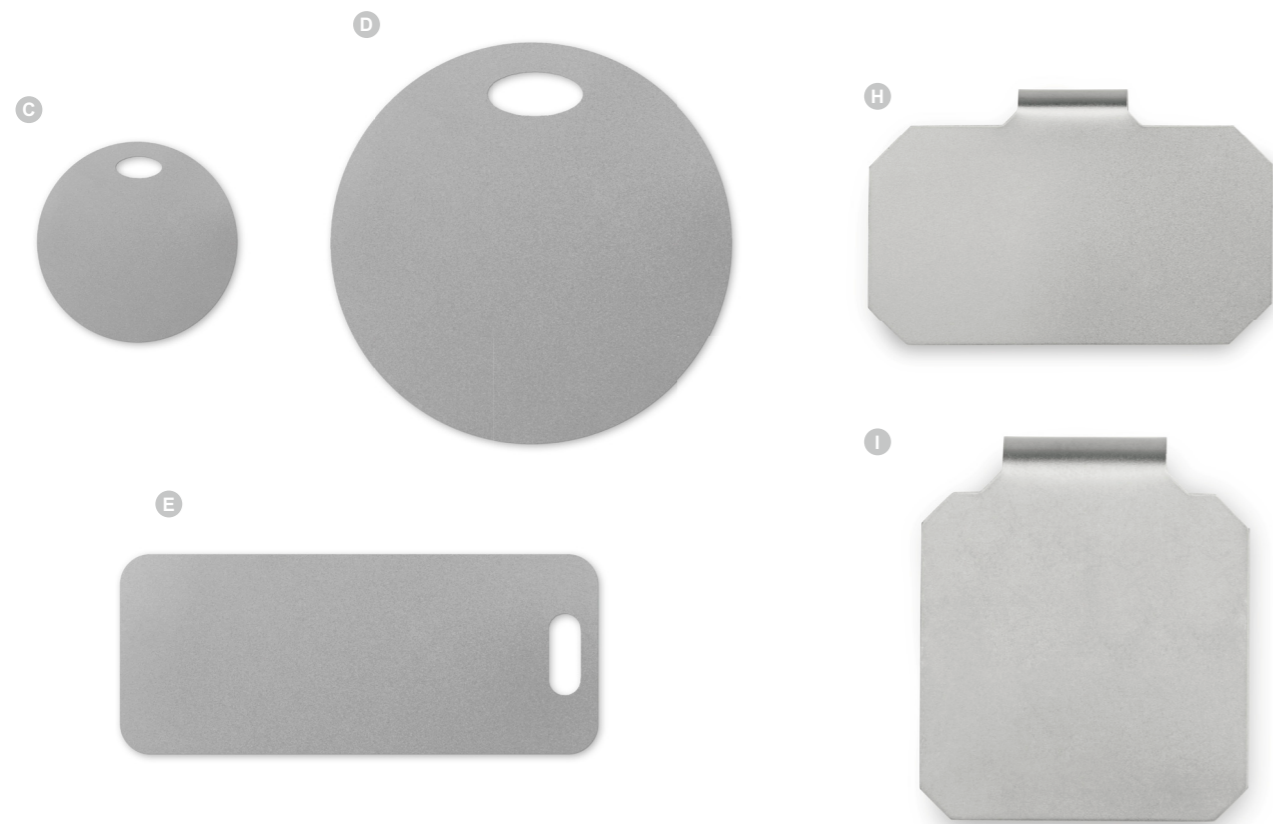
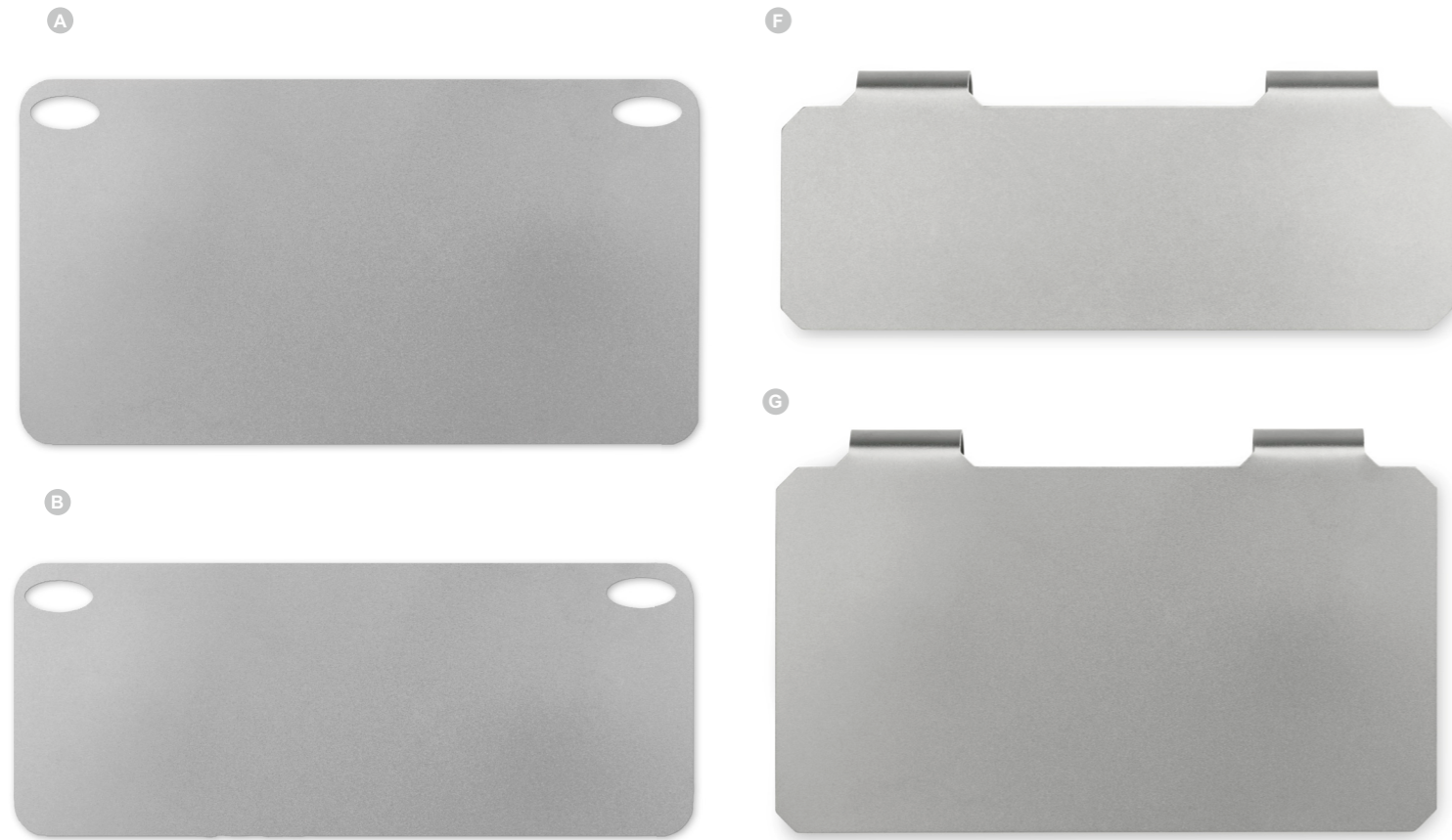
Suitable for narrow inserts on containers and laser marking.

REF	Color	Format (mm)	Qty
E 28500	silver	18 x 50	25 pcs
F 28501	blue	18 x 50	25 pcs
G 28502	red	18 x 50	25 pcs
H 28503	yellow	18 x 50	25 pcs
I 28504	green	18 x 50	25 pcs
J 28505	black	18 x 50	25 pcs



FIRST TAG SHOWN ACTUAL SIZE

Tags - Metal Tags



TAGS MADE OF STAINLESS STEEL FOR SIEVE TRAY LABELING

Durable tags made of stainless steel. Reusable and heat-resistant.

REF	Description	Format (mm)	Qty
A 01444	label	90 x 50	50 pcs
B 01445	label	90 x 33	50 pcs
C 01452	tag with hole (4 x 9mm)	Ø 25	50 pcs
D 01453	tag with hole (4 x 9mm)	Ø 50	50 pcs
E 01588	tie-on tag with hole (6 x 10mm)	65 x 24	50 pcs
F 01449	clip label	90 x 30	50 pcs
G 01454	clip label	90 x 50	50 pcs
H 01559	clip label	55 x 30	50 pcs
I 01493	clip label	30 x 30	50 pcs
J 01590	clip label, suitable for double frame	75 x 35	50 pcs
K 01520	clip label, suitable for double frame	42 x 36	50 pcs



TAGS SHOWN ACTUAL SIZE



STOPPERS FOR TRAY ACCESSORIES

Stoppers designed to secure tray accessories such as labels, tags, corner protectors, among others.

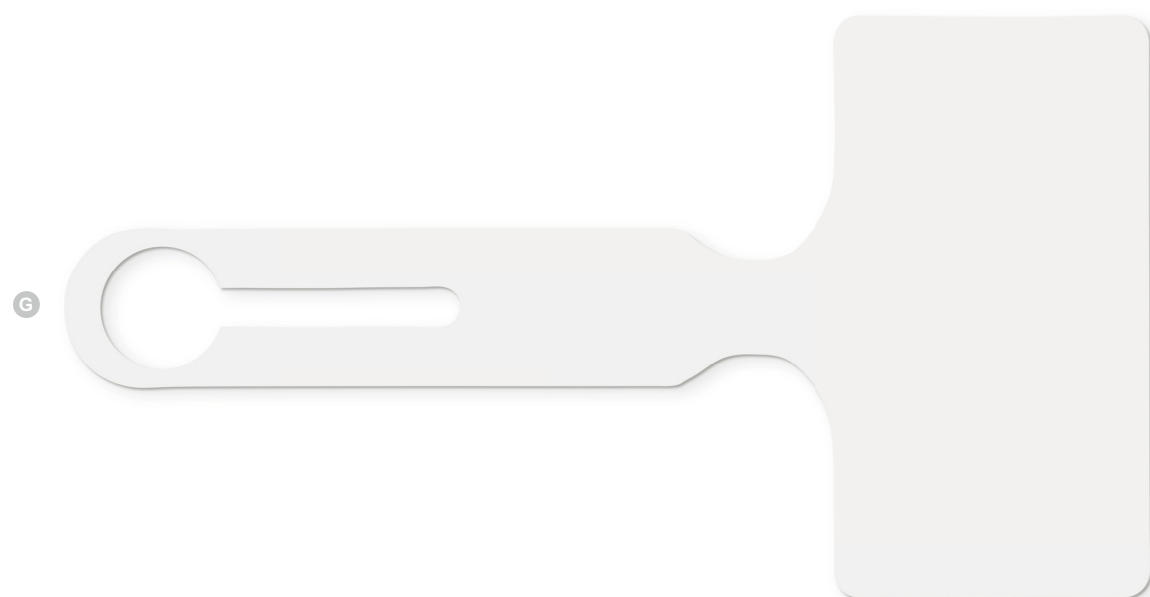
REF	Description	Material	Color	Qty
A 09097	-	silicone	white	100 pcs
B 09225	-	silicone	blue	100 pcs
C 09226	-	silicone	red	100 pcs
D 09227	-	silicone	yellow	100 pcs
E 09228	-	silicone	green	100 pcs
F 09230	-	plastic	white	100 pcs
G 09465	modell 2013	silicone	pink	100 pcs
H 09466	modell 2013	silicone	transparent	100 pcs
I 09468	modell 2013	silicone	red	100 pcs
J 09470	modell 2013	silicone	green	100 pcs
K 09487	mini, for attaching sieve tray labels to perforated plate mesh trays	silicone	transparent	100 pcs

ACCESSORIES TO SECURE TRAY ACCESSORIES

REF	Description	Format (mm)	Qty
L 01589	clipper for tie-on tag; with holes REF 01588 and in particular REF 02253 - 02255	40	5 pcs
M 01458	key ring for affixing sieve tray tags	Ø 20	100 pcs
N 08443	bolts with raised head	4.0 x 8.0	50 pcs
O 08952	bolts	1.6 x 6.0	100 pcs
P 08953	flat washers	1.6 x 4.0	100 pcs
Q 08954	flat washers	2.0 x 7.0	100 pcs
R 08444	cap nuts for bolts (REF 08443)	4.0 x 8.0	50 pcs
S 08955	nuts	1.6	100 pcs
T 08477	clamping fixture set comprising: - 1 x cap nut - 1 x flat washer - 1 x fixing plate	4.0	100 pcs



Tags – One-Loop Tags



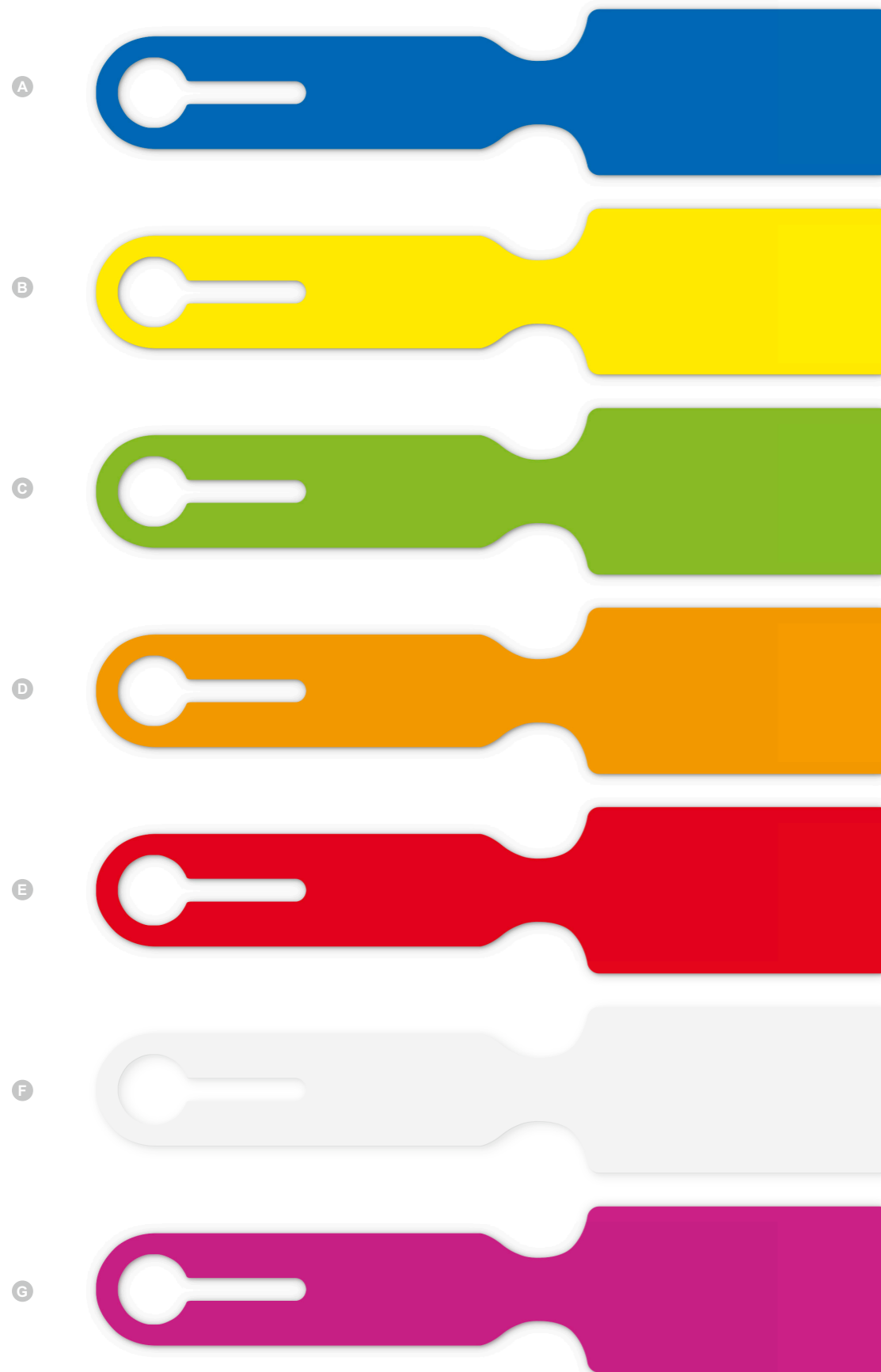
ONE-LOOP TAGS

One-Loop Tags are used for color identification of trays and containers between departments. They are heat-resistant and can be used throughout the entire reprocessing cycle. In addition to the standard labels, we offer customized prints and colors (for more information, please contact your local sales representative). Single use.

REF	Color	Format (mm)	Qty
A 09634	white	160 x 35	250 pcs
B 09637	red	160 x 35	250 pcs
C 09636	green	160 x 35	250 pcs
D 09638	yellow	160 x 35	250 pcs
E 09676	brown	160 x 35	250 pcs
F 09635	blue	160 x 35	250 pcs
09268	white	206 x 110	250 pcs
G 9599	white	206 x 110	250 pcs
G 9751	white	240 x 50	250 pcs

K

Tags

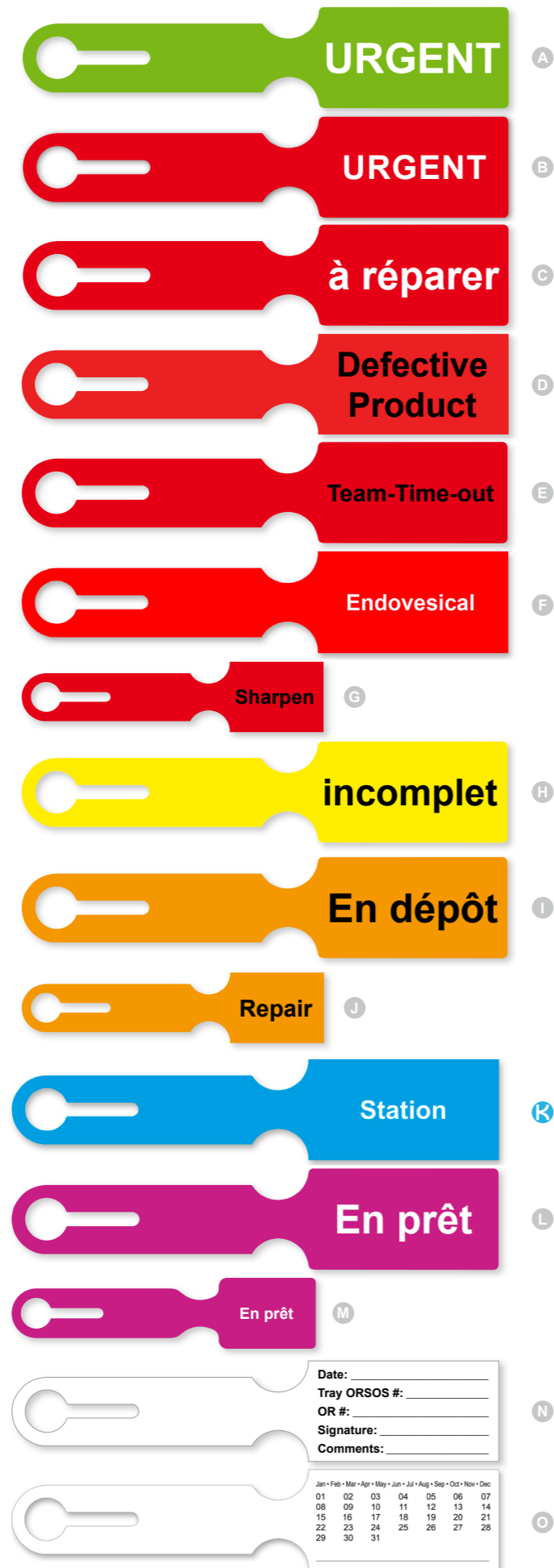


ONE-LOOP TAGS CONTINUED

One-Loop Tags are used for color identification of trays and containers between departments. They are heat-resistant and can be used throughout the entire reprocessing cycle. In addition to the standard labels, we offer customized prints and colors (for more information, please contact your local sales representative). Single use.

REF	Color	Format (mm)	Qty
A 09264	blue	236 x 50	250 pcs
A 09566	blue one-sided	240 x 50	250 pcs
B 09267	yellow	236 x 50	250 pcs
B 09569	yellow one-sided	240 x 50	250 pcs
C 09265	green	236 x 50	250 pcs
C 09567	green one-sided	240 x 50	250 pcs
D 09269	orange	236 x 50	250 pcs
E 09266	red	236 x 50	250 pcs
E 09568	red one-sided	240 x 50	250 pcs
F 09244	white	236 x 50	250 pcs
F 09244SP	white	240 x 50	250 pcs
G 08338	pink one-sided	240 x 50	250 pcs
08337	light blue	240 x 50	250 pcs





Tags – One-Loop Tags

PREPRINTED LABELS

Available in various colors and sizes . Minimum order requirement of 3,000 labels.

	REF	Description	Color	Format (mm)	Qty
A	09570	URGENT	green	240 x 50	250 pcs
B	08378	URGENT	red	240 x 50	250 pcs
C	08320	à réparer	red	240 x 50	250 pcs
D	09564	Defective Product	red	240 x 50	250 pcs
E	09755	Team-Time-out	red	240 x 50	250 pcs
F	09790	Endovesical	red	240 x 50	250 pcs
G	09752	Sharpen	red	150 x 35	250 pcs
H	08328	incomplet	yellow	240 x 50	250 pcs
I	08327	En dépôt	orange	240 x 50	250 pcs
J	09753	Repair	orange	150 x 35	250 pcs
K	09789	Station	blue	240 x 50	250 pcs
L	08319	En prêt	violet	240 x 50	250 pcs
M	18038	En prêt	violet	150 x 35	250 pcs
N	09565	ORSOS	white	240 x 50	250 pcs
O	09762	Calendar	white	240 x 50	250 pcs

K

Tags

Tags – Self-Tie Tags



SELF-TIE TAGS

Self-Tie Tags are designed for the identification of trays that are to be steam sterilized. Plain tag with dumbbell self-tie. Single use.

REF	Description	Format (mm)	Qty
A 09691	reel 5,000 pcs	160 x 19	1 roll
B 09399	reel 600 pcs	254 x 42	1 roll

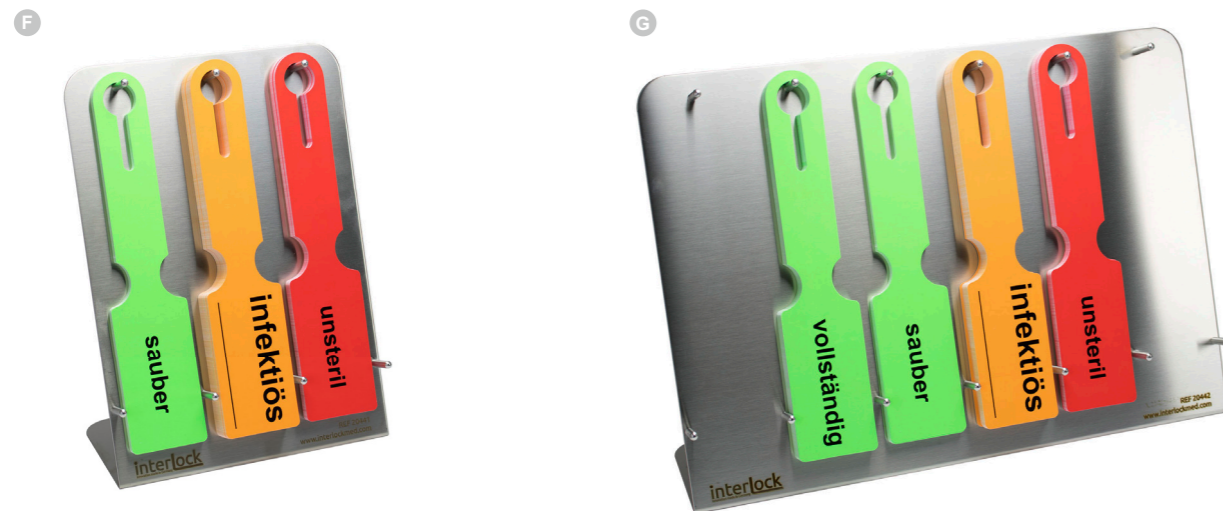
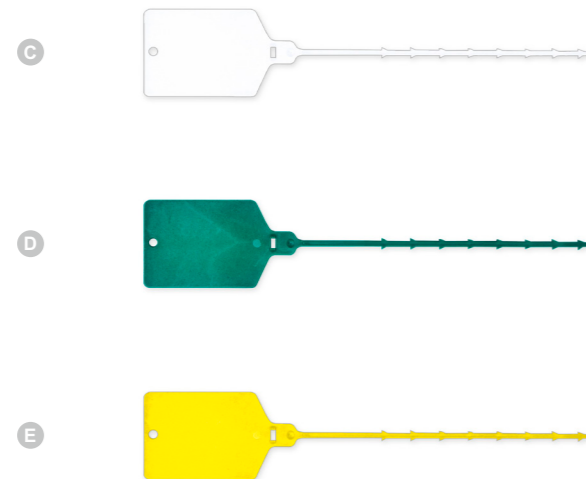
POLYPROPYLENE TRAY TAGS

Compatible with steam sterilization and heat-resistant up to 134 °C, suitable for washer-disinfectors.

REF	Color	Lettering field size (mm)	Length (mm)	Qty
C 09679	white	50 x 30	200	100 pcs
D 09681	green	50 x 30	200	100 pcs
E 09683	yellow	50 x 30	200	100 pcs

STAINLESS STEEL RACK FOR TRAY TAGS

REF	Description	Format (mm)	Qty
F 20441	3 hooks, 4 self-adhesive feet (12.7 x 1.8mm)	188 x 100 x 255	1 pcs
G 20442	6 hooks, 4 self-adhesive feet (12.7 x 1.8mm)	368 x 100 x 255	1 pcs





WRITE-ON TAGS

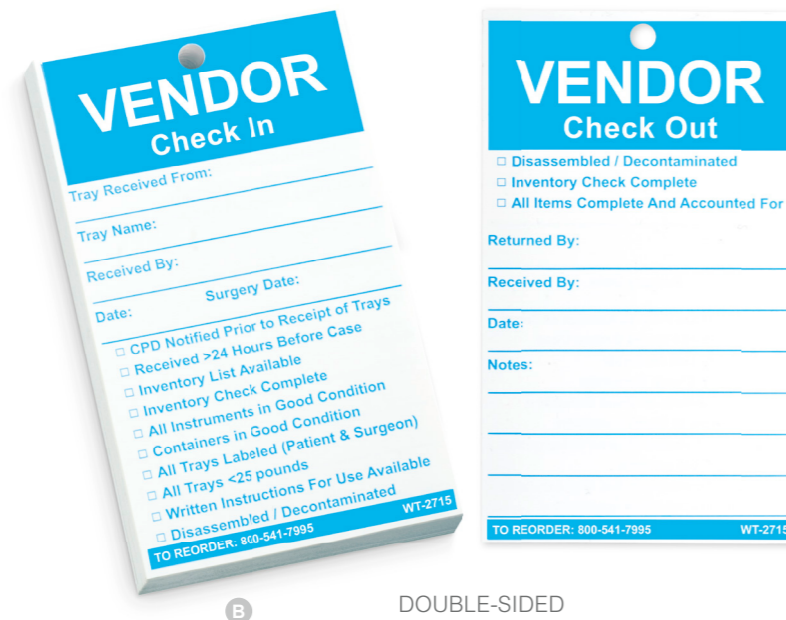
Durable and economical. Identify and record specific instructions with these versatile tags. Tamper-resistant. Compatible with steam and H₂O₂ sterilization. Customizable. 76 x 127mm. Each package includes 100 cable ties and a lab marker. Single use.

REF	Description	Color	Qty
A WT-0009	BLANK	black	100 pcs
B WT-0102	VENDOR	blue	100 pcs
C WT-0203	LOANER	green	100 pcs
D WT-0304	PRIORITY	red	100 pcs
E WT-0405	RE-RUN	yellow	100 pcs
F WT-0507	BROKEN	orange	100 pcs
G WT-1911	MISSING	pink	100 pcs
H RT-100	BROKEN DO NOT USE	white	100 pcs
I RT-200	BLANK	white	100 pcs

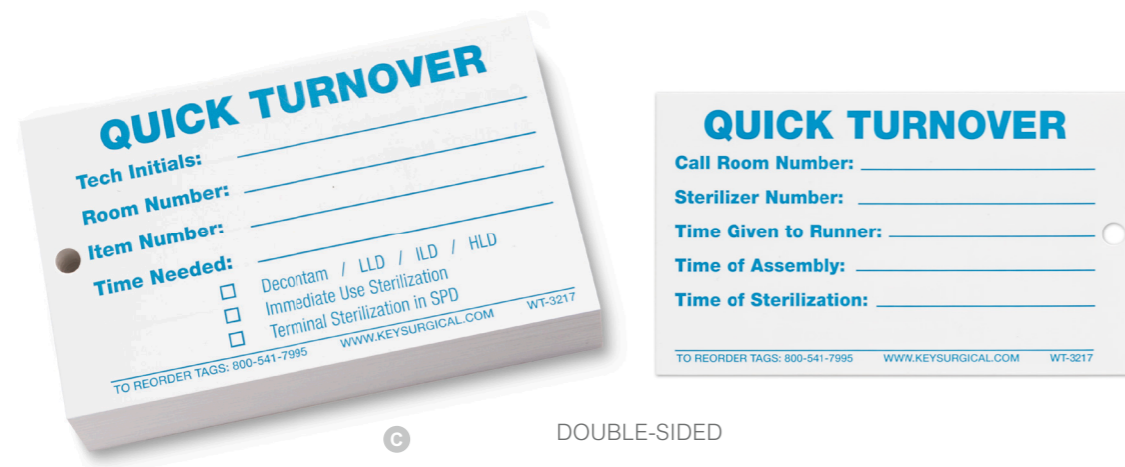




A DOUBLE-SIDED



B DOUBLE-SIDED



C DOUBLE-SIDED

WRITE-ON TAGS

Durable and economical. Identify and record specific instructions with these versatile tags. Tamper-resistant. Compatible with steam and H₂O₂ sterilization. Customizable. 76 x 127mm. Each package includes 100 cable ties and a lab marker. Single use.

	REF	Description	Color	Qty
A	WT-2614	LOANER	light green	100 pcs
B	WT-2715	VENDOR	light blue	100 pcs
C	WT-3217	QUICK TURNOVER	blue	100 pcs