

Name: Cut Tray Anchors

Product Codes: ANC001, ANC002

Name of Manufacturer:



Intended Use

Cut Tray Anchors are foam strips which are designed to aid in the positioning and protection of surgical instruments in a sterilisation tray during the process of steam sterilisation.

Key Surgical Cut Tray Anchors are intended to be used by professional healthcare personnel working in sterile services (or similar) departments.

Sterilisation Compatibility

Cut Tray Anchors are compatible with steam sterilisation only.
They are not suitable for sterilisation by other sterilisation processes.

Single use

Cut Tray Anchors are single use products only.

Storage Conditions

Cut Tray Anchors should be stored away from sources of sunlight and UV light to prevent yellowing.

Precautions

Cut Tray Anchors should be stored away from any sources of ignition.

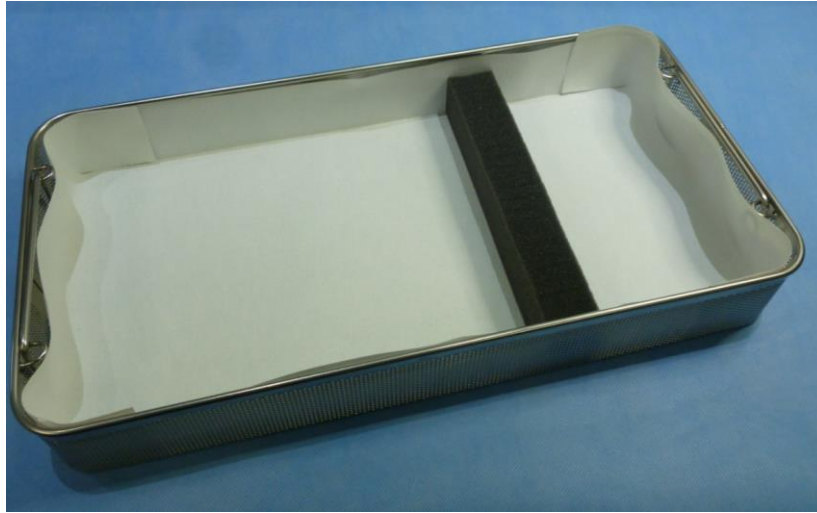
Disposal

Unused Security Ties may be recycled to specialised foam recycling streams.
Unused Cut Tray Anchors are not recyclable in normal plastic waste so if a foam recycling stream is not available, they should be disposed of in the general non-recyclable waste stream.

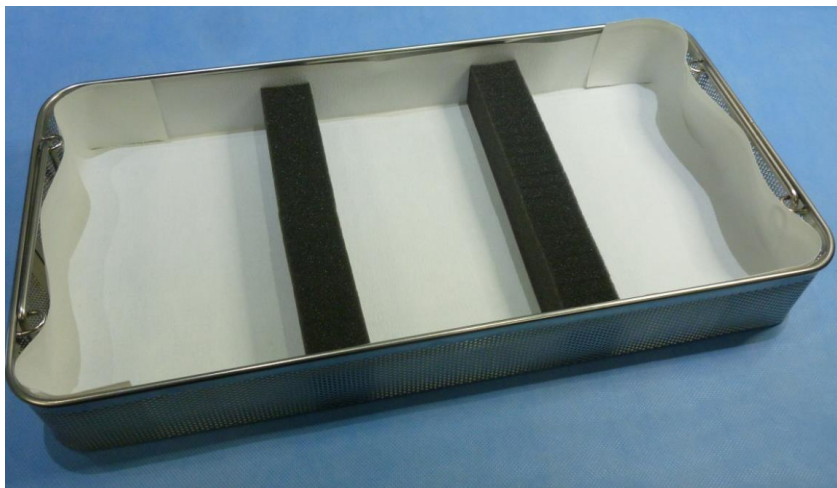
Used Cut Tray Anchors should be disposed of by considering possible microbial contamination. Users should reference their own procedures in this matter.

How to use Key Surgical Cut Tray Anchors

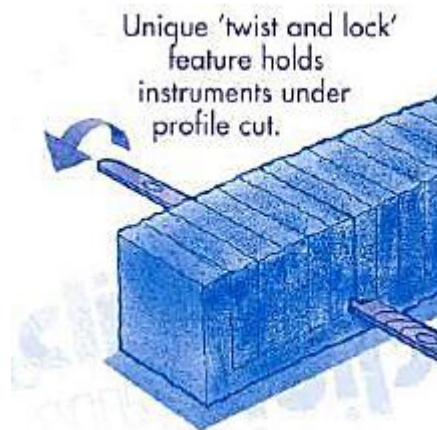
- 1) Cut the 460mm long line of Cut Tray Anchors into a length which is slightly longer than the width of the tray to be used (in order to obtain a tight fit so that the length of Tray Anchors does not move during use).
- 2) Fit the trimmed length of Tray Anchors across the width of the tray. A Tray Liner can be used underneath the Cut Anchor:



- 3) If the instruments to be anchored are quite large, then a second or third line of Tray Anchors may be used to ensure the instruments are kept in place:



- 4) Take the instrument and push it down into the appropriate slot in the length of Tray Anchors until it reaches the bottom. Then twist the instrument to hold the instrument underneath the Cut Tray Anchor, as shown below:



- 5) Repeat step with all the instruments and all the lines of Tray Anchors:



- 6) Push the point of the Tie through hole in the other end making sure the end is pushed through from the numbered side of the tie.
- 7) If the instrument is large or wide, then the individual sections should be cut away in order to widen the slot

